



CQPWIN

Shareware Contest Logging by AE6Y

**“No need to learn a
foreign language”**



CQPWIN ver. 11.0

- Windows 95 and later compatible
- Fast, Easy to Use
- Not Crash-Prone
- Each QSO written to disk immediately
- Free



Contests Supported

- International
 - AA, ARRL DX, ARRL 10m, CQWW, WPX
- Domestic
 - NAQP, Sprint, SS
- State QSO Parties
 - CQP, NEQP, PAQP
- Non-Contest
 - Generic Logging



My Computer Learn To Speak Spanish Redline Outlook Express GeoClock Shortcut to cqpwin102....

Ad-Aware SE Personal NTI Shadow Unused Desktop Deep Space Explorer Google Shortcut to Feb 08 Aru...

Norton Protecte... QuickTime Player Deep Space Explorer (2) Microsoft FrontPage (2) Shortcut to Feb 08 Aru...

Internet Explorer Talk Now Plus! DX4WIN ver. 5.03 Microsoft Money 2005 Shortcut to hhw.exe

America On Line ALF BC Work ALF BC Outlook W... Visual Basic 6.0 Morse Runner Starry Night Backyard... Shortcut to Mar 08 Aru...

Electcraft K3 Utility Aruba Contests Backup DX4WIN-C... Word RufzXP

Languages of the World Electcraft K3 Notepad GEMHomeV... Shortcut cqpwin101

QSL TQSLCert Windows Media Pla...

wt-3.19.0.exe VB 4 Help Winkkeyer2

CQP Multipliers

1	2	3	4	5	6	7	8	9	UE
\$CT	\$NJ	\$AL	\$AR	\$CA	\$AK	\$HI	\$CO	\$MC	
\$ME	\$NY	\$FL	\$LA	\$HI	\$AZ	\$OH	\$IA	\$QR	
\$MA	\$GA	\$MS	\$ID	\$WV	\$KS	\$ON			
\$NH	3	\$KY	\$NM	\$MT	\$MN	\$MB			
\$RI	\$DE	\$NC	\$OK	\$NV	9	\$MO	\$SK		
\$VT	\$MD	\$SC	\$TX	\$OR	\$IL	\$NE	\$AB		
\$PA	\$TN			\$UT	\$IN	\$ND	\$BC		
	\$VA			\$WA	\$WI	\$SD	\$NT		
				\$WY					

QSO Stats

SSB/CW	All	10m	15m	20m	40m	80m	160
QSOs:	1010/1120	3/3	213/210	489/431	159/317	129/138	33/46
Qs/Hr:	99/81	51/44	94/70	97/86	134/90	97/90	98/62
Pts/Hr:	198/243	102/134	183/207	191/250	268/264	196/270	197/184
Mults	58	..	35	23

Qs/Pts per Hour Time

Last Hr: 61/136 Band-Mode: 00:08

Last 10: 150/300 Total: 23:59

Overall: 90/224 SSB/CW: 10:11/13:49

View and Edit Log

10/08/06	40	SSB	2150	KH2TJ/6	2162	197	PLUM	2
10/08/06	40	SSB	2150	W7KU	2163	225	AZ	2
10/08/06	40	SSB	2151	K16PG	2164	84	TUOL	2
10/08/06	40	SSB	2151	KJ6MD	2165	4	LASS	2
10/08/06	40	SSB	2152	N6SPB	2166	101	SCLA	2
10/08/06	40	SSB	2153	W6BO	2167	990	SUTT	2
10/08/06	40	SSB	2154	W6ML	2168	1638	MONO	2
10/08/06	40	SSB	2154	W6C	2169	481	VENT	2
10/08/06	40	SSB	2154	A6GK	2170	375	SJOA	2
10/08/06	40	SSB	2154	N6ORB	2171	96	CQOS	2

Go To: Start End #

Edit Close

DVK

File QSO Nr Test

[Not Playing]

F1	CQ417
F2	CQ547
F3	CQ620
F4	QRZ398
F5	TU274
F6	TU461
F7	QRZ705
F11	CQBeg830
F12	CQBeg944

Stop

Blue - Radio 1
Red - Radio 2
(Right Click to Change)

CQWIN by AE6Y ver. 11.0

File Edit Radio/WK View Help

R1 14039.35 CW R2 21281.73 USB Score: 312,040

Radio1 QSO Nr 2172 (20m CW) Mults: 58


Callsign Exchange

N6T

Log it Cancel CW-PC: 35 WK Pot: 32

Log: C:\Program File...98\06cqp.cqp - - Contest: CQP
GMT: 1931:07 Local Time: 1131:07

Logging Window



CQPWIN by AE6Y ver. 11.0

File Edit Radio/WK View Help

R1 14039.35 CW R2 21281.73 USB

Radio1 QSO Nr 2172 (20m CW) **Score: 312,040**
Mults: 58

Callsign	Exchange
N6T	

Log it **Cancel** **CW-PC:** **35** **WK Pot:** **32**

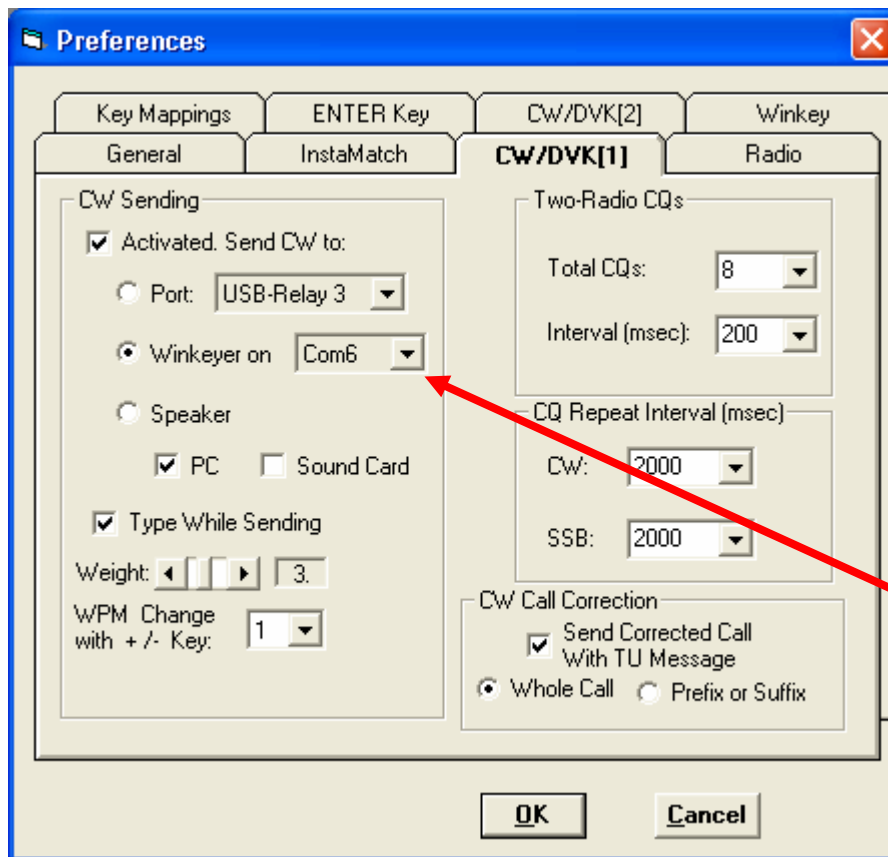
This bd/md: N6TU N6TV

Other bd/mds: N6T N6TP N6TU N6TU N6TU N6TU N6TU N6TU

Old logs: N6TH N6TNX N6TPT N6TU N6TV

Log: C:\Program File...98\06cqp.cqp - - Contest: CQP
GMT: 1919:54 Local Time: 1119:54

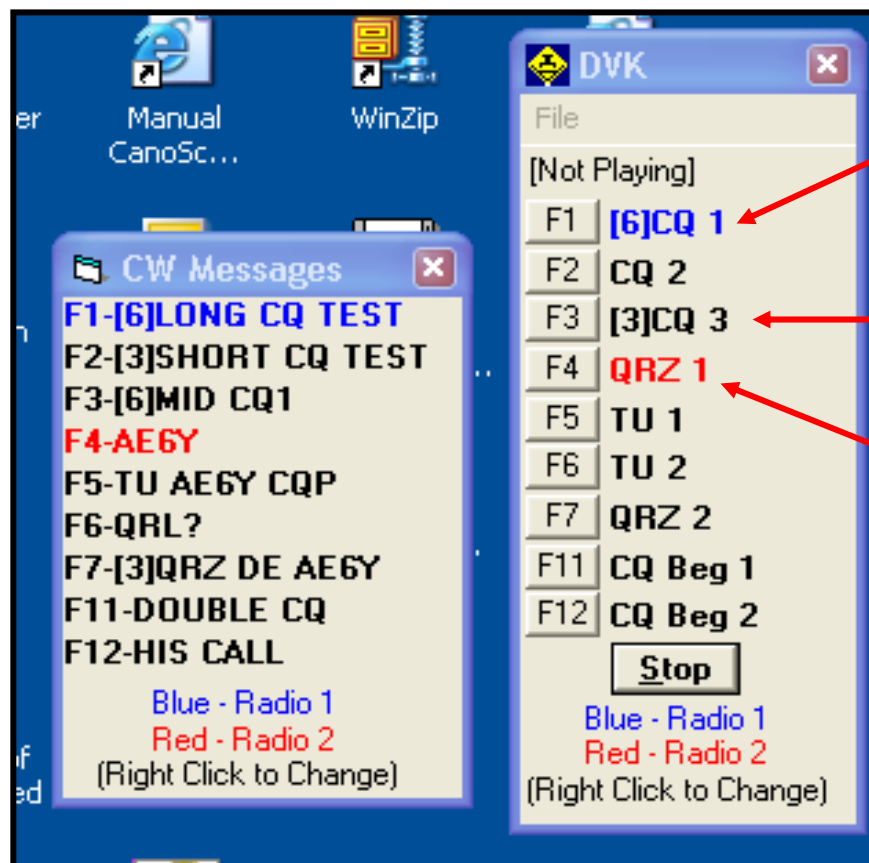
Easy Setup



**Standard Windows
Preferences Format**

**Supports Com, LPT
and USB ports**

CW/DVK Work Similarly



Radio 1, 6x

Active Radio, 3x

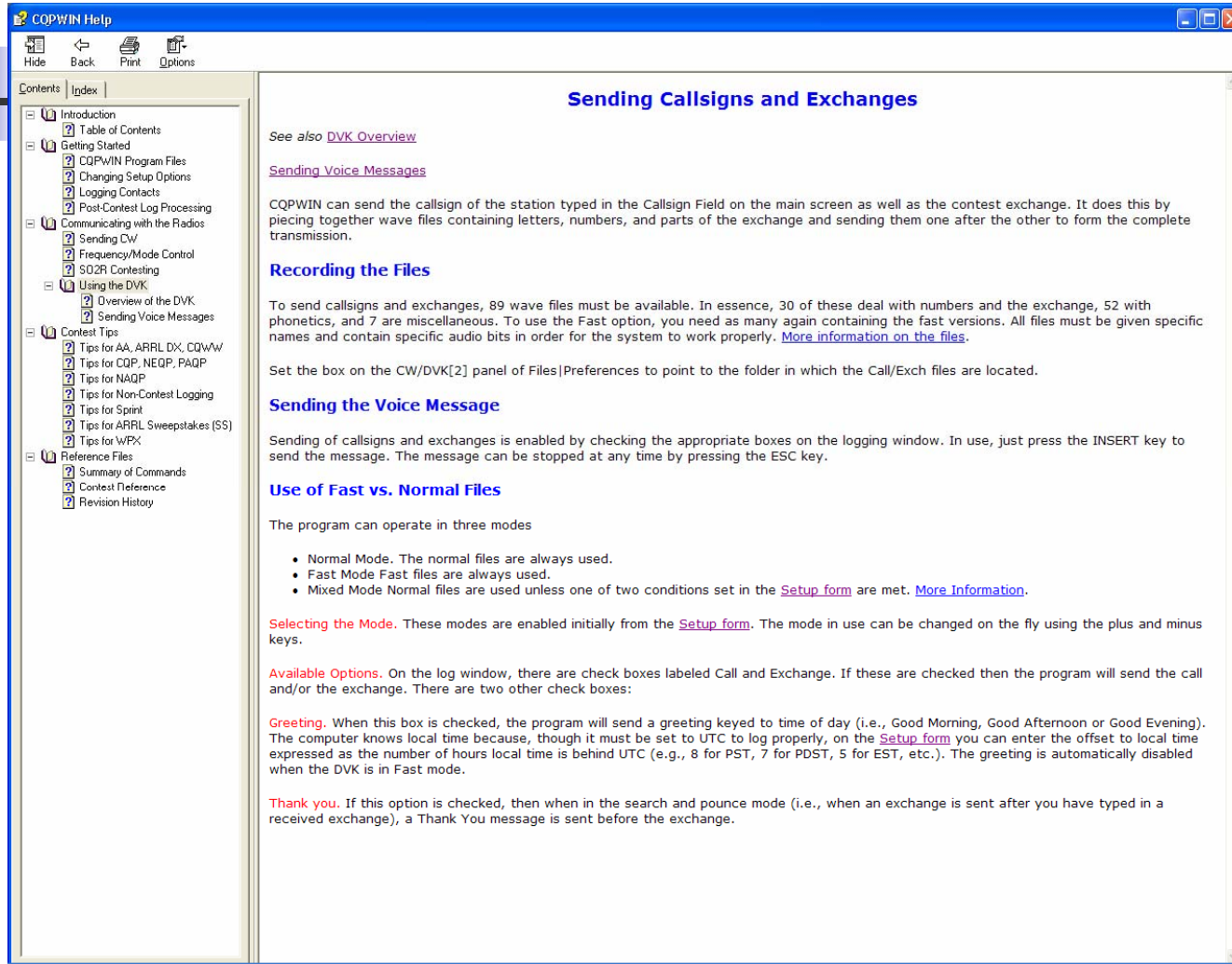
Radio 2, 1x

Detailed Stats and Rates

QSO Stats						
SSB/CW	All	10m	15m	20m	40m	80m
QSOs:	1430/725	321/119	554/208	387/212	53/165	137/30
Qs/Hr:	96/81	89/72	94/90	106/79	113/87	100/67
Pts/Hr:	192/243	176/216	185/263	210/236	227/262	199/203
Mults	58	23	30	5	--	--
<hr/>						
<u>Qs/Pts per Hour</u>			<u>Time</u>			
Last Hr: 75/151			Band-Mode: 00:23			
Last 10: 67/120			Total: 23:48			
Overall: 91/211			SSB/CW: 14:53/8:55			

**CQP: Qs
and Pts
per Hour
for Phone
and CW**

Complete Help File





Some Contest Features

- CQP
 - In-state and out-of-state support
 - Phone/CW SO2R CQs
- Sprint
 - Auto-detect CQ vs. S & P mode
 - Send different exchanges
- NAQP
 - QSY info and simplified entry



What type of user is this logger
best suited for?

- Occasional contester
- Serious single-op



What are the three most significant shortfalls of this logger?

- No multi-op network support
- No band-map or packet cluster
- Limited contest support



What three things distinguish this logger from others?

- Robust program
- Easy to set up and use
- “It won’t do everything possible, but it won’t drive you nuts, either.”

Why did you choose, or migrate to, this logger?

Why should someone, in general, choose this logger?

- **AE6Y:** Desire to win the category of “contester using his own software” [Occasionally beaten by N6TR]
- **Others:** Ease of use, simplicity, large type